

# Human Tools Design Project Assessments/Teacher Masters/ Photo Cards/Visual Pack: Table of Contents

## Assessments

Human Tools and Technology Rubric .....	1
---	---

## Teacher Masters

Request for Materials.....	1
Photo Card Matches .....	2
Interview—Student.....	3
Family Link: Interview—Adult .....	4
Chindogu Tool Sketch.....	5

## Photo Cards

“Human Tools” Photo Cards .....	1-12
---------------------------------	------

## Visuals

Chindogu Tool Examples .....	1
------------------------------	---

2011 Edition Copyright © 2010 Chicago Science Group. All Rights Reserved

Printed in the United States of America. Except as permitted under the United States Copyright Act, no part of this publication may be reproduced or distributed in any form or by any means or stored in a database or retrieval system without the prior written permission of the publisher.

SCIENCE COMPANION®, EXPLORAGEAR®, the CROSSHATCH Design™ and the WHEEL Design® are trademarks of Chicago Science Group and Chicago Educational Publishing Company, LLC.

ISBN 10: 1-59192-538-X ISBN 13: 978-1-59192-538-5

1 2 3 4 5 6 7 8 9 10-BK1, 0413, D12263

www.sciencecompanion.com Chicago Educational Publishing Company, LLC

# Rubric: Human Tools and Technology

	Criterion A	Criterion B	Criterion C
	Parts of the human body can be used as tools.	Tools and technology can extend capabilities of human body parts.	Tools and technology can improve our lives, but they can also contribute to problems.
<b>4 - Exceeds Expectations</b> Explores content beyond the level presented in the lessons.	Understands at a secure level (see box below) and shows interest in looking for ways they are used in everyday situations.	Understands at a secure level (see box below) and can apply this understanding to a variety of situations.	Understands at a secure level (see box below) and shows an interest in looking for ways this occurs in everyday situations.
<b>3 - Secure (Meets Expectations)</b> Understands content at the level presented in the lessons and does not exhibit misconceptions.	Can explain how parts of the body can be used as tools.	Can describe the ways that many tools and technology can extend the capabilities of human body parts.	Can describe a number of ways that tools and technology can improve our lives as well as contribute to problems.
<b>2 - Developing (Approaches Expectations)</b> Shows an increasing competency with lesson content.	Knows that some parts of the body can be used as tools, but cannot explain how they can be used.	Knows that, in general, tools and technology can extend the capabilities of human body parts, but is unable to describe how this occurs.	Knows that tools and technology can improve our lives and contribute to problems, but can only describe a few ways this can occur.
<b>1 - Beginning</b> Has no previous knowledge of lesson content.	Doesn't know that some parts of the body can be used as tools.	Doesn't know that tools and technology can extend the capabilities of human body parts.	Doesn't know that tools and technology can improve our lives or contribute to problems.

## Request for Materials

Dear Families,

Next week in science class we will be performing an exploration that requires the following materials:

If you can donate or lend any of these items, please send them to class with your child  
by \_\_\_\_\_.  
(requested date)

Thank you for your support,

\_\_\_\_\_

# Photo Card Matches

Body Part	Tool or Technology*
Arms	Hammer
Hands	Pliers, sharp knife, scissors
Cupped hands	Water pitcher
Feet	Boots, swim fins
Legs	Bicycle, school bus
Skin	Bee suit, hooded jacket, astronaut suit
Mouth	Cell phone
Teeth	Sharp knife, scissors
Ears	Hearing aid
Eyes	Binoculars
Lungs	Snorkeling child
Bones	Cast
Brain	Calculator, computer

**\*Teacher Note:** Some of the tools and technologies may correspond with more than one body part. For example, the knife, fork, and spoon might be classified with hands or with teeth.

**Name:** \_\_\_\_\_ **Date:** \_\_\_\_\_

## **Interview—Student**

1. What tool or technology do you use often?

2. How does this tool or technology make your life easier?

3. How could this tool or technology work better?

**Name:** \_\_\_\_\_ **Date:** \_\_\_\_\_

## Family Link with Science

# Interview—Adult

1. What tool or technology do you use often?
2. How has this tool or technology improved your life?
3. How have you seen this tool or technology contribute to problems?
4. How have you seen this tool or technology change during your lifetime?

**Name:** \_\_\_\_\_ **Date:** \_\_\_\_\_

## Chindogu Tool Sketch

What classroom item or items will your tool work with?

Draw and label a sketch of your tool:

# “Human Tools” Photo Cards



**Arms**



**Hands**



**Cupped Hands**



**Feet**



**Legs**



**Skin**



**Mouth**



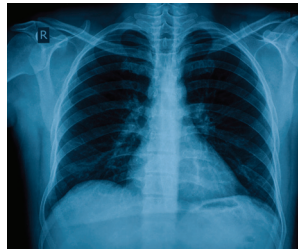
**Teeth**



**Ears**



**Eyes**



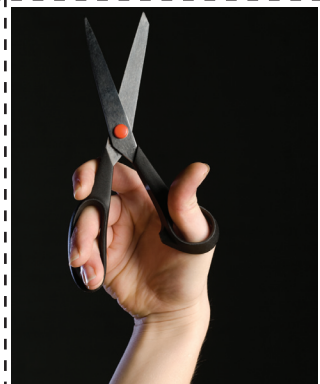
**Lungs**



**Bones**



**Brain**





# “Human Tools” Photo Cards



**Arms**



**Hands**



**Cupped Hands**



**Feet**



**Legs**



**Skin**



**Mouth**



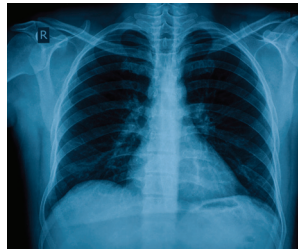
**Teeth**



**Ears**



**Eyes**



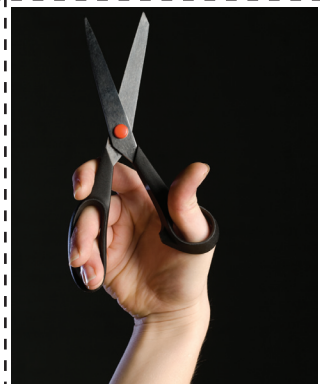
**Lungs**



**Bones**



**Brain**



# “Human Tools” Photo Cards



**Arms**



**Hands**



**Cupped Hands**



**Feet**



**Legs**



**Skin**



**Mouth**



**Teeth**



**Ears**



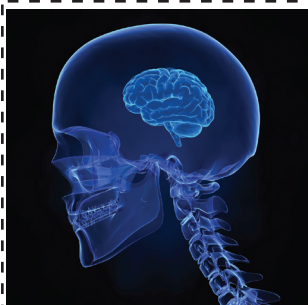
**Eyes**



**Lungs**



**Bones**



**Brain**





# “Human Tools” Photo Cards



**Arms**



**Hands**



**Cupped Hands**



**Feet**



**Legs**



**Skin**



**Mouth**



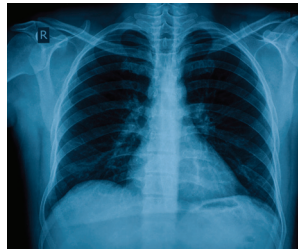
**Teeth**



**Ears**



**Eyes**



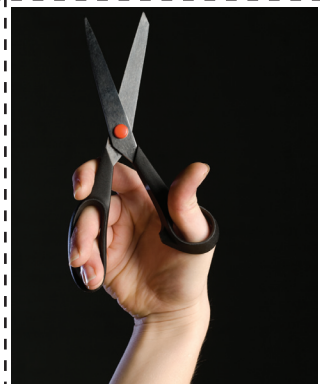
**Lungs**



**Bones**



**Brain**



# “Human Tools” Photo Cards



**Arms**



**Hands**



**Cupped Hands**



**Feet**



**Legs**



**Skin**



**Mouth**



**Teeth**



**Ears**



**Eyes**



**Lungs**



**Bones**



**Brain**





# “Human Tools” Photo Cards



**Arms**



**Hands**



**Cupped Hands**



**Feet**



**Legs**



**Skin**



**Mouth**



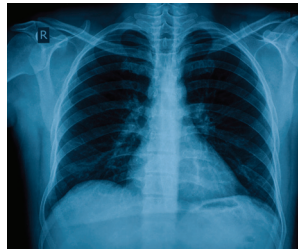
**Teeth**



**Ears**



**Eyes**



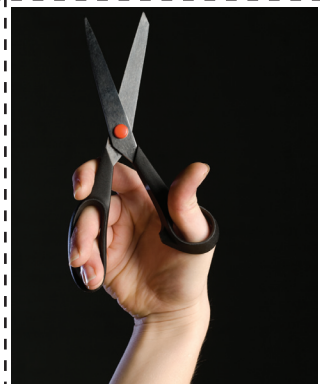
**Lungs**



**Bones**



**Brain**





# “Human Tools” Photo Cards





# “Human Tools” Photo Cards





# “Human Tools” Photo Cards





# “Human Tools” Photo Cards





# “Human Tools” Photo Cards





# “Human Tools” Photo Cards



# Chindogu Tool Examples

