

Watery Earth Unit Visuals:

Table of Contents

Visuals

Water Scene 1 (Lesson 1)	1
Water Scene 2 (Lesson 1)	2
Water Scene 3 (Lesson 1)	3
Earth from Space—East (Lesson 4)	4
Earth from Space—West (Lesson 4)	5
Water Scene 4 (Lesson 6)	6
Water Scene 5 (Lesson 6)	7
Water Scene 6 (Lesson 6)	8
City Water (Lesson 9)	9

2012 Edition Copyright © 2005 Chicago Science Group. All Rights Reserved

Printed in the United States of America. Except as permitted under the United States Copyright Act, no part of this publication may be reproduced or distributed in any form or by any means or stored in a database or retrieval system without the prior written permission of the publisher.

SCIENCE COMPANION®, EXPLORAGEAR®, the CROSSHATCH Design™ and the WHEEL Design® are trademarks of Chicago Science Group and Chicago Educational Publishing Company, LLC.

ISBN 10: 1-59192-266-6 ISBN 13: 978-1-59192-266-7

1 2 3 4 5 6 7 8 9 10-BK1, 0512, D9596

www.sciencecompanion.com

Chicago Educational Publishing Company, LLC

Water Scene 1



Water vapor condenses from a boiling tea kettle.

Photo: Lance Campbell and David Sherman

Water Scene 2



Early morning lake fog. Lake Carroll, Carrollton, Georgia.



Train in the fog. Point of Rocks, Maryland.

Photos: NOAA, Department of Commerce

Water Scene 3



Photos: Photos.com

Earth from Space—East



Photo: NASA

Earth from Space—West



Photo: NASA

Water Scene 4



Aerial View of a Glacier.

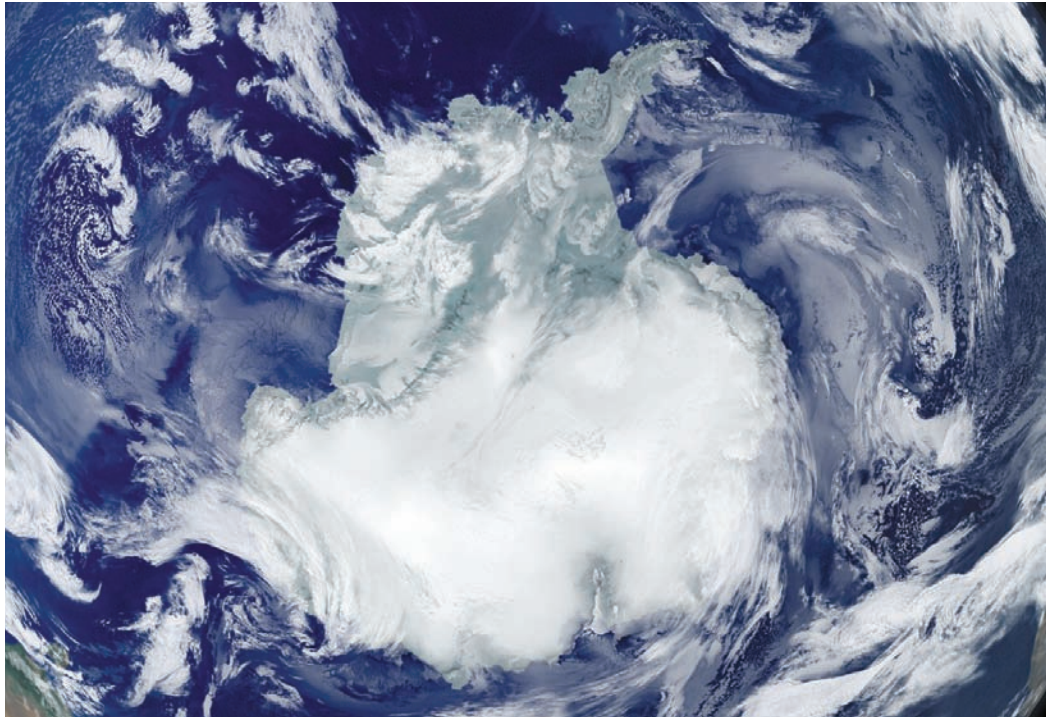
Photo: Photos.com



Spencer Glacier, Alaska.

Photo: Lance Campbell

Water Scene 5



Antarctica from space.

Photo: NASA, Visible Earth Collection (<http://visibleearth.nasa.gov/>)



Antarctica. Castle Rock looms out of the fog. Tracked vehicle on the right.

Photo: Commander John Bortniak, NOAA Corps

Water Scene 6



NOAA Ship SURVEYOR in the ice of the Bering Sea.

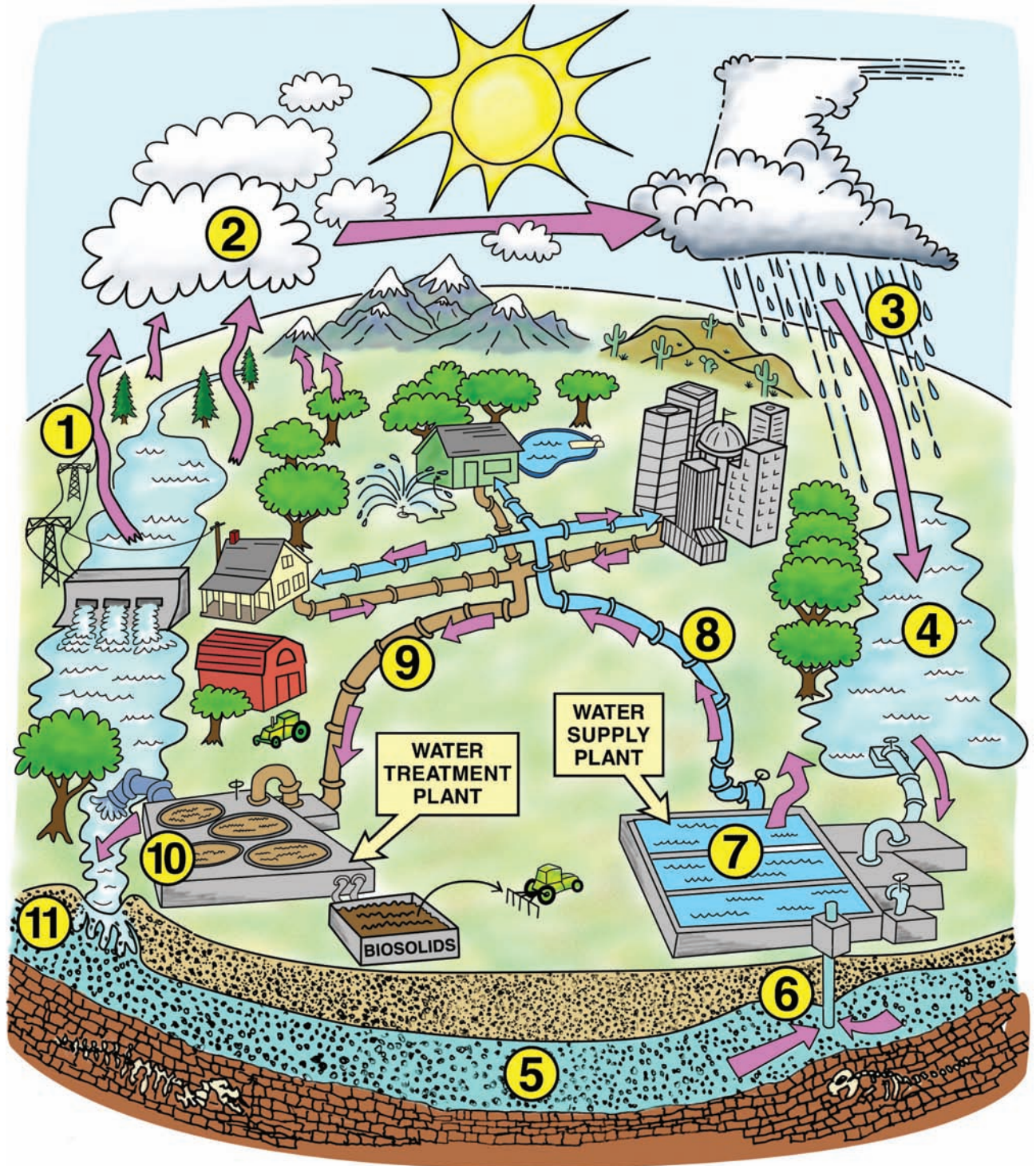
Photo: Commander Eric Davis, NOAA



Sunset over sea ice.

Photo: Michael Van Woert, NOAA

City Water



Adapted from Environmental Protection Agency, Region 6 poster